



Relax by the Fire

ScapeStone XL™ Fire Pit



ScapeStone™ Fire Pit



Olde Boston Fire Pit



Roman Pisa® Fire Pit

ScapeStone™, ScapeStone™ XL, Olde Boston™, & Roman Pisa® Fire Pits



Our “Block-n-Ring” fire pit kits are compact, solid in construction, and easy to build. There is no guess work! Choose a round or square style; both come with block that feature our genuine Drum-Roll Tumbled® finish in our attractive Vineyard or Quarry Blends. Simply stack the wall unit of choice to the desired height. Wood-burning fire pits require our heavy-duty steel insert ring. All our fire pits can be fitted to burn LP or natural gas.

Build Your Own

Fire Pit	Style	Ht/Wt	Units/Course	3 Courses	4 Courses	5 Courses	I.D.	O.D.
ScapeStone	Round	4" / 20 lb	11	33 pcs (12" h)	44 pcs (16" h)	55 pcs (20" h)	30"	44"
ScapeStone XL	Round	4" / 22 lb	14	42 pcs (12" h)	56 pcs (16" h)	70 pcs (20" h)	44"	60"
Olde Boston	Square	4" / 28 lb	12	36 pcs (12" h)	48 pcs (16" h)	60 pcs (20" h)	28"	44"
Roman Pisa	Square	6" / 32 lb	8 Jumbo / 4 Corner	36 pcs (18" h)	48 pcs (24" h)	60 pcs (30" h)	28"	44"

You can also customize our fire pits by adding accent banding, such as our Olde Boston

Installation

Attention: Make sure to check building codes in your area or with your local fire department. There may be restrictions on open fires or where you can place the fire pit in relation to your house or other structures. If using LP or natural gas, a licensed plumber may be required to install the gas line, fittings and the appliance.

Recommended Base Prep: The fire pit should sit on a firm, non-combustible base, such as 6" of compacted gravel or graded stone. Dig a hole at the center point approximately 12" in diameter by 2' deep and fill it with crushed stone to help drain rainwater, ashes and soot.

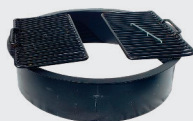
Stacking the Courses: Use the steel ring insert as a guide to lay out the first course. Place it on the ground and position a row of block around the ring. Remove and set the ring aside. Adjust and level the block side-to-side and front-to-back. Position the second course by offsetting the joints from the block in the row below. For a uniform inside diameter, plumb the units to the back of the block. Repeat this for each course until you have reached the desired height (see chart). Finish off the unit with our CastStone Coping and place the ring back in the fire pit. You MUST fill the fire pit with a graded stone or sand to within 12" of the top course or to the bottom of the steel ring.

Steel Ring Options



Round, no grate
ScapeStone & ScapeStone XL

Round with cooking grates
ScapeStone



Square
Olde Boston Wall & Roman Pisa

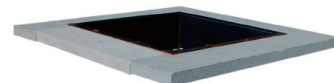
Coping Options



CastStone Coping for
ScapeStone & ScapeStone XL
Available in Slate Grey



CastStone Square Coping
Available in Slate Grey
and Graphite



Bluestone Square Coping

Gas Insert Options



Round Pan TMSI

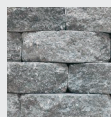


Square Pan TMSI

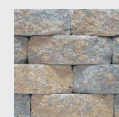
We carry a wide variety of options to create fire pits and fireplaces that will enhance and complement your home. Choose from a selection of lava stone or glass media and inset burners to complete your project.

Fire Pit Stone Color Options

ScapeStone & ScapeStone XL



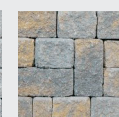
Quarry Blend



Vineyard Blend

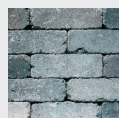


Quarry Blend

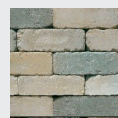


Vineyard Blend

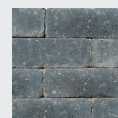
Olde Boston



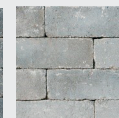
Quarry Blend



Vineyard Blend



Charcoal



Pewter

APPLICATION KEY

Please contact your local sales rep for specific job & product applications



Fire Pits

A white deposit known as efflorescence may appear naturally on any concrete or masonry product. It does not effect the structural integrity and will dissipate over time. Efflorescence is not indicative of a flawed product. For more information, ask for Ideal's Efflorescence Advisory. ©2009-2017 ScapeStone™ and Olde Boston™ WallStone are trademarks of Ideal Concrete Block Co. Roman Pisa is a trademark of Jagna Ltd.