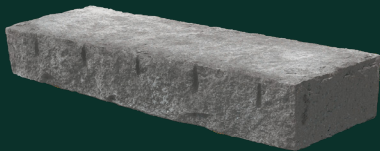




CHELMSFORD™ STEP



Rockface Side
48" L x 15" D x 7" R



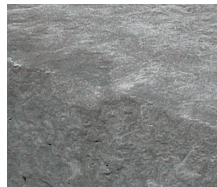
Feather and Wedge Side
48" L x 15" D x 7" R

Our Chelmsford Step is a durable precast concrete unit molded with the cleft and contours found in natural stone steps. Chelmsford Step is available with a choice of two faces in a single unit. One side reproduces the traditional style that stone masons achieved by using "feathers and wedges" to split the face, while the opposite face features a more contemporary rock-face.



IdealBlock.com | info@IdealBlock.com | 800-24-IDEAL

COLORS



Slate Grey

APPLICATIONS



PALLET OVERVIEW

PIECES PER PALLET	8
RISE	7"
WEIGHT PER PIECE	468 lb
WEIGHT PER PALLET	3775 lb



CHELMSFORD STEP™



FEATURES

- ▶ Choice of two faces in a single unit
- ▶ One face reproduces a traditional Feather and Wedge style while the opposite face features a more contemporary Rockface style
- ▶ Easily build steps that beautifully integrate with our wall systems
- ▶ Features 7" rise
- ▶ Durable precast concrete unit molded with the cleft and contours found in natural stone

PHYSICAL CHARACTERISTICS

Chelmsford steps are molded to replicate natural stone steps and are comprised of a strong, dense concrete that is resistant to freeze-thaw. To avoid the surface scaling, sand is recommended for traction control in lieu of deicing chemicals

Nominal Size/Coverage	15" x 48"
Thickness	7"

PATTERNS & GUIDELINES

- ▶ NA

TECHNICAL SERVICES

Please call our sales office or visit our website for complete technical information and literature. We also offer design consultation, specification assistance, and job-site quality review upon request.



Deicing Advisory