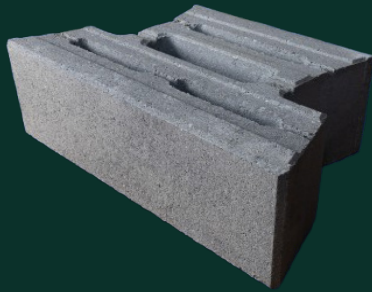




**NEW**

# STONEWALL<sup>®</sup> ION



Stretcher Unit  
Face 1: 6" x 18" x 11"  
Face 2: 6" x 12" x 11"

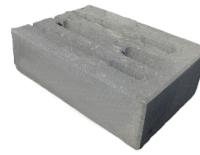
StoneWall ION delivers more than a contemporary look. Its light-weight, durable design—combined with unmatched versatility and innovation—makes it an ideal choice for elevating any hardscape project. From retaining walls and terraces to above-grade structures, StoneWall ION integrates seamlessly across your entire outdoor design in both single and double sided applications.



IdealBlock.com | info@IdealBlock.com | 800-24-IDEAL



## CORNERS



Left Corner  
Long Face: 6" x 18"  
Short Face: 6" x 15"  
End Face: 6" x 11"



Right Corner  
Long Face: 6" x 18"  
Short Face: 6" x 15"  
End Face: 6" x 11"

## COLORS



Quarry Blend

## APPLICATIONS



## PALLET OVERVIEW

	ION FACE UNIT	ION CORNERS
PIECES PER PALLET	45	20 pairs
PIECES PER SQFT	Multi Face 1.6 pcs / Single Sided Large Face Only 1.33 pcs	2 pcs/lf (1 pr/lf)
SQFT PER PALLET	33.75 sqft / 40.60 sqft	20 lf
WEIGHT PER PIECE	55 lb	68 lb
WEIGHT PER PALLET	2500 lb	2750 lb

# STONEWALL® ION



## FEATURES

- ▶ Smooth surface for more modern appeal
- ▶ Can be used in both single and double sided applications
- ▶ Chamfered edges provide clean lines
- ▶ Reversible alignment plug allow for vertical and set back construction
- ▶ Suitable for residential, commercial and municipal applications

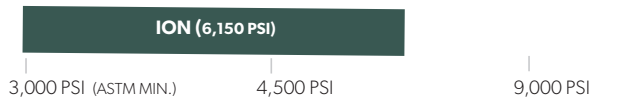
## PHYSICAL CHARACTERISTICS

StoneWall ION meets or exceeds the North American industry standard, including ASTM C 1372 Standard Specification for Drycast Segmental Retaining Wall Units. Strict quality control ensures consistent strength and durability.

### Nominal Size

Stretcher Unit	Face 1: 6" x 18" x 11" • Face 2: 6" x 12" x 11"
Left Corner Unit	Face 1: 6" x 18" • Face 2: 6" x 15" • End Face - 6" x 11"
Right Corner Unit	Face 1: 6" x 15" • Face 2: 6" x 18" • End Face - 6" x 11"

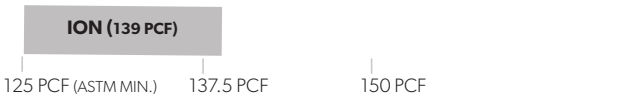
### Compressive Strength



### Water Absorption



### Density



Dimensional Tolerance ± 1/8"



Deicing Advisory

What the Ideal standard test results mean to you. We don't meet specs, we exceed them.

- High PSI
- Low Absorption
- High Density

This results in generations of durability in every product we produce.

## TECHNICAL SERVICES

Please contact our sales office or visit our website for complete technical information and literature. Design consultation, specification assistance, and job-site quality reviews are available upon request. Walls over 4 feet high, terraced walls, and sites with weak soils, slopes, or surcharges require special engineering, construction techniques, and geogrid reinforcement. These conditions require a qualified engineer and experienced wall contractor. Always comply with local building codes.



www.IdealBlock.com  
781.894.3200